

K Smith Interiors Measurement Guide



What You'll Need:

A measuring tape or laser measure

Paper and pencil or a measurement app

A helper (for larger spaces)

Measuring your space might seem daunting initially, but by following these steps and tips, you can achieve precise results that will greatly aid any project or purchase. Remember, the key to successful measurement is patience and precision.

Tips for Accurate Measurement

When using a measuring tape, ensure it's straight and taut to avoid sagging. For large rooms, having a friend to assist can make the process smoother. For tricky-to-reach areas, a laser measure can expedite the process and improve accuracy.

Prepare Your Space

Begin by clearing the area of any removable obstacles that might distort your measurements, such as furniture, rugs, or decorative items. Ensure the floors are mostly bare and the walls are accessible.

Choose Your Dimensions

Decide if you'll be measuring in feet and inches or centimeters and meters, depending on your region or personal preference. Consistency is key in getting accurate measurements.

Measure the Length, width and height

Start with the Length: Place the end of your measuring tape at one corner of the room. Extend the tape straight to the opposite corner. Record this measurement as the length of your room.

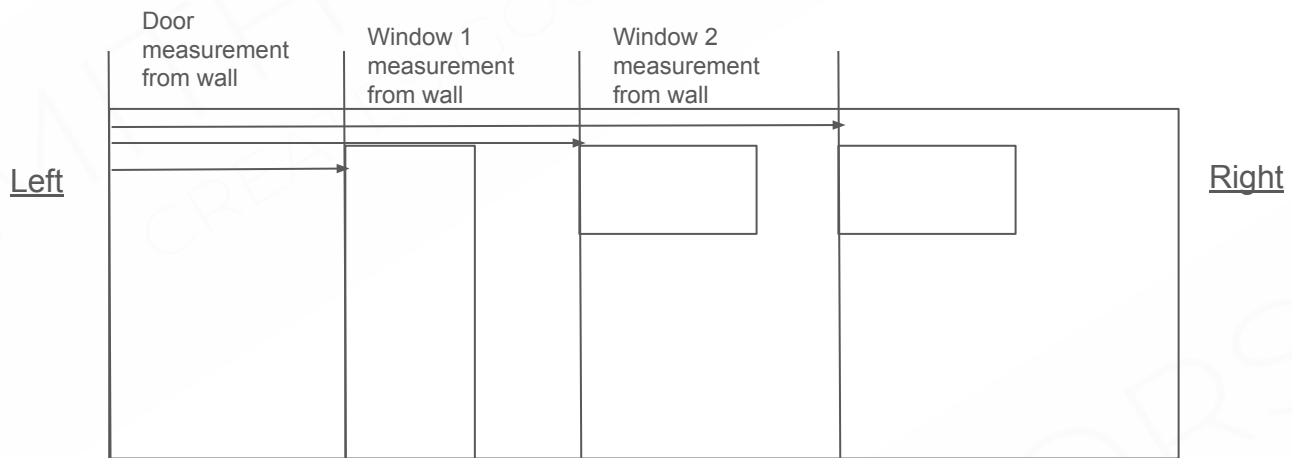
Measure the Width: Repeat the process from another corner to get the width of your room. Make sure to measure wall to wall at the room's widest points.

Measure the Height

Measure from the floor to the ceiling at different points in the room. This step is especially important in older homes where ceiling heights may vary.

Factor in doors and Windows

Select one side of the room (left or right side) that you will measure the placement of the door or window opening.



Doors: Measure the height and width of each door, including the frame. Note which way the door opens.

Windows: Measure the height and width of each window, including the sill and frame. Note any significant distance from the floor or ceiling.

Sketch It Out

As you go, sketch a rough layout of your space, labeling each measurement as you take it. This visual aid will be invaluable for planning your design and appliance layout.

Double-Check Your Measurements

Errors can easily occur, so it's vital to measure at least twice to ensure accuracy.